



EXCLUSIVE SKIN PRIVILEGE



SYLFIRM X

Emerging Dual Wave RF Micro-Needling System

Difference of 300 Micron

The NEW 300 Micron depth Microneedles are precisely produced by the robotic system, which brings evenly-leveled electrodes to penetrate an accurate target depth during the treatment.



Minimally Invasive



Short Treatment



Less Downtime



Very Comfortable



No Side Effect



Promising Result

NEW DESIGN for X

Premium Exterior Design



Tip Design for Operator Convenience



Convenient Magnetic Type Foot Switch



Extend the Holder Length & Lighter Handpiece



KOREA. #808-809, Bundang-Technopark C, 744 Pangyo-Ro, Bundang-Gu, Seongnam-Si, Gyeonggi-Do, Republic of Korea 13510

Phone. +82-31-8017-7893 **FAX.** +82-8016-7834

E-MAIL. scarletsales@scarletrf.com www.viol.co.kr

USA. 3699 Wilshire Blvd, #550, Los Angeles, CA, USA 90010



ULTIMATE EDITION

SKIN PRIVILEGE

Silicon Valley, USA



For Export

ULTIMATE EDITION

SYLFIRM X

Emerging Dual Wave RF Micro-Needling System



Dual Wave RF Micro-Needling System

Continuous Wave(CW) & Pulsed Wave(PW)

SYLFIRM X and its 8 different CW/PW modes have proved its effectiveness and safety through numerous clinical studies and animal experiments.

Bipolar Non-insulated Electrode System

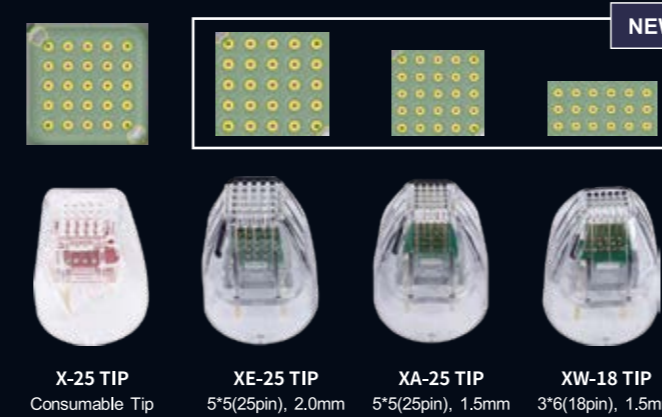
SYLFIRM X adopted bipolar non-insulated microneedle electrodes to cover all dermal layers with uniform electric field and maximize the treatment result specifically for the melasma, rosacea, and PIH during the Pulsed Wave(PW) modes, including skin tightening and other benefits during the Continuous Wave(CW) modes.

Robotic Production System

The microneedles are precisely produced by the robotic system, which brings evenly-leveled electrodes to penetrate an accurate target depth during the treatment.



NEW TIP for X



Depth	Target Layer
0.3 ~ 0.5mm	Superficial Layer(Papillary Dermis)
0.8 ~ 1.2mm	Upper Layer(Dermo-Epidermo junction)
1.5 ~ 2.5mm	Middle Layer(Upper & Mid Dermis)
3.0 ~ 4.0mm	Deeper Layer(Deeper Dermis & S.Q.)

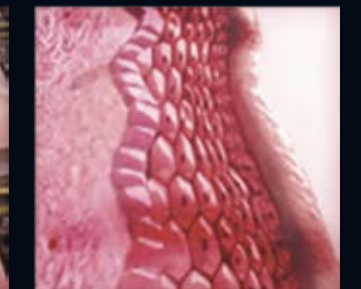
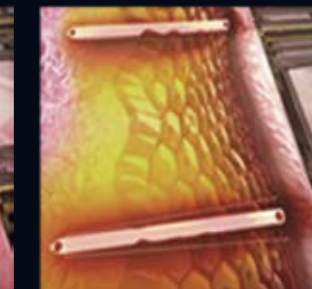
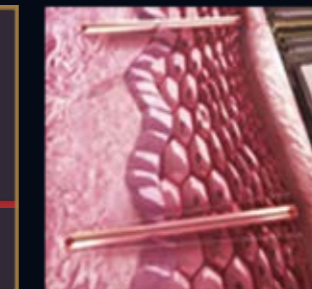
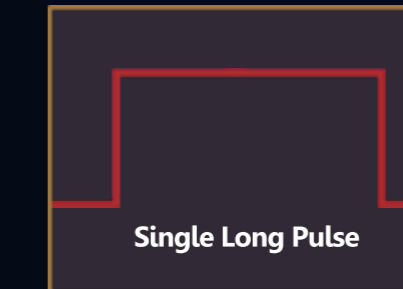
Clinical Data



CW(Continuous Wave) Mode

Independent Coagulation, NA effect for total dermal layer

- CW mode creates wide, independent coagulation around each electrode.
- The coagulation area continues from deeper dermis to upper dermis with one penetration.
- Promising dermal remodeling and Skin Tightening.
- Clients can see the skin contraction immediately.



Electrodes inserted into the dermal tissue

Short Pulse RF Shooting 55~60°

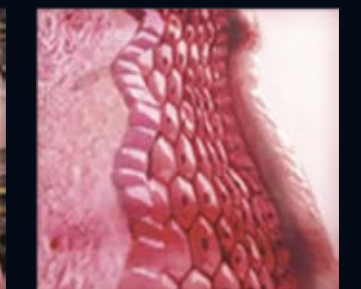
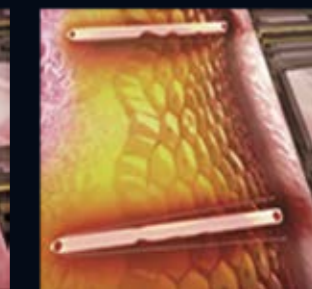
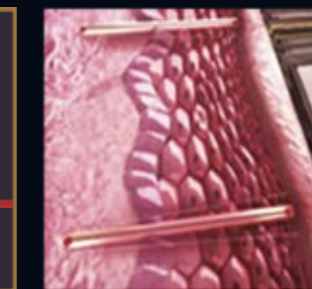
Thermal energy are delivered along electrodes in total dermal layer

Wave Form	CW1	CW2	CW3	CW4
Application	Scalp Lifting, Hair Regrowth	Facial Tightening & Lifting	Face, Body Tightening & Lifting	Face, Body Tightening & Lifting, Stretch Mark, Acne Scar, Double Chin

PW(Pulsed Wave) Mode

Selective Coagulation for Basement Membrane & Blood Vessel

- PW mode creates a soft coagulation selectively in basal layer & upper dermis.
- It coagulates B.M. and abnormal small blood vessels, while the surrounding tissue while the surrounding tissue is intact.
- Selective coagulation and dermal remodeling help to recover from hyper active melanogenesis as well as hyper angiogenesis.



Electrodes inserted into the dermal tissue

Repeated hyper pulsed RF energy shooting 42~45°

Energy delivered to the basement membrane and abnormal small blood vessel

Wave Form	PW1	PW2	PW3	PW4
Application	Melasma, Pigmented Lesions (Skin Type 2~3)	Melasma, Pigmented Lesions (Skin Type 4~6), Redness	Vascular Lesion	Acne, Telangiectasia